



## Product End-of-Life Disassembly Instructions

**Product Category:** Control Panel/Display

**Marketing Name/Models(s):**

UPG 185RM18A

UPG AB200A

UPG AB201A

UPG AB202A

UPG AB203A

UPG AB204A

UPG AB205A

UPG AB206A

UPG AB207A

UPG AB208A

UPG AB209A

UPG AB210A

UPG AB211A

UPG AB212A

UPG AB213A

UPG AB214A

UPG AB215A

UPG AB216A

UPG AB217A

UPG AB218A

UPG AB219A

UPG AB220A

**Purpose:** This document provides the basic instructions for the disassembly of a product to remove components and materials requiring selective treatment as defined by Directive 2012/19/EU, Waste Electrical and Electronic Equipment (WEEE). It is intended for use by end-of-life recyclers or treatment facilities.

### 1.0 Items Requiring Selective Treatment

1.1 Items listed below are classified as requiring selective treatment.

1.2 Quantity of items within the product that require selective treatment (right column).

Item Description	Notes	Quantity of items included in product
Printed Circuit Board (PCB) or Printed Circuit Assembly (PCA)	With a surface area greater than 10 sq cm	5
Batteries	All types	0
Mercury-containing components	Such as: mercury in lamps, display backlights, scanner lamps, switches, batteries	0
Liquid Crystal Display (LCD) with a surface area greater than 100 sq cm	Includes background illuminated displays with gas discharge lamps	1
Cathode Ray Tube	N/A	0
Capacitors/Condensers containing PCB/PCT	N/A	0
Electrolytic Capacitors/Condensers measuring greater than 2.5 cm in diameter or height	N/A	0
External electrical cables and cords	Customers may not have used all the cables and cords supplied.	5
Gas Discharge Lamps	N/A	0
Plastics containing Brominated Flame Retardants weighing >25 grams (not including PCBs or PCAs already listed above)	N/A	0
Components and parts containing toner ink, including liquids, semi-liquids (gel/paste) and toner	Including cartridges, print heads, tubes, vent chambers and service stations.	0
Components and waste containing Asbestos	N/A	0
Components and waste containing Cadmium	N/A	0
Components, parts and materials containing refractory ceramic fibers	N/A	0
Components, parts and materials containing radioactive materials	N/A	0

### 2.0 Tools Required

2.1 List of tools types and sizes required to be used to disassemble the product to a point where components and material requiring selective treatment can be removed.

Tool Description	Tool Size
Torx screwdriver	T8, T10, T15

Nut driver	3/16 in
Flat blade screwdriver	

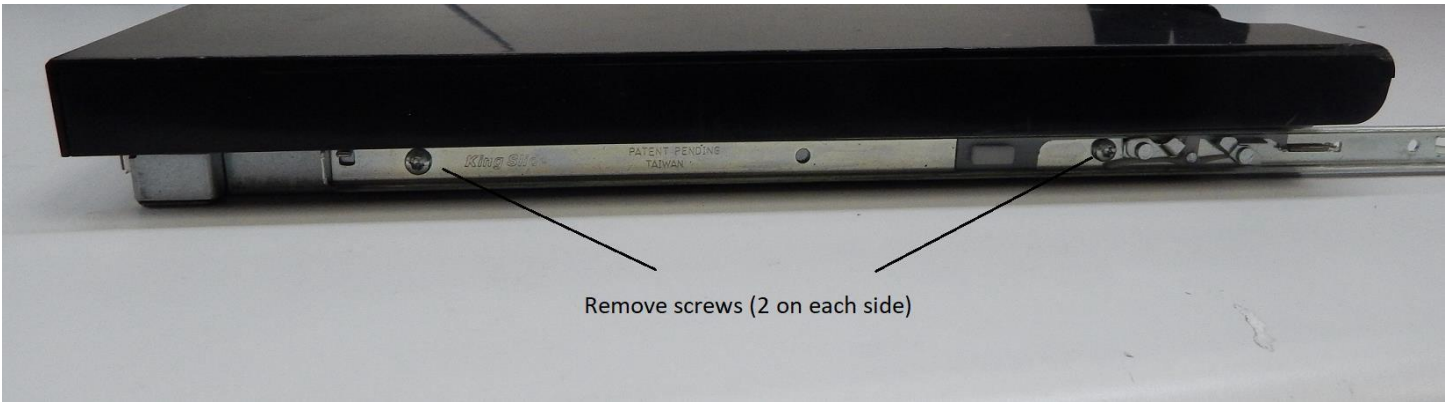
### 3.0 Product Disassembly Process

3.1 List of basic steps that should typically be followed to remove components and material requiring selective treatment.

1. Slide Rail Removal: Use a T15 Torx screwdriver to remove the screws (2 on each side). See Picture 1.
2. Console Back and Clutch Cover Disassembly: Use a T15 Torx screwdriver to remove the screws. See Picture 2.
3. Palm Rest and Keyboard Screws: On the bottom side of the product, remove the (8) size T15 screws which hold the palm rest and the (4) size T8 screws which hold the keyboard. See Picture 3.
4. Palm Rest Removal: Flip over and open the console lid. Lift up on the palm rest edges to remove from console. See Pic 4.
5. Touchpad Removal: Disconnect PCB cable. Use a Torx T10 Screwdriver to remove the 2 screws. See Picture 5.
6. Magnetic Component Removal. See Picture 6.
7. Clip and Cable Removal: Use Torx T15 screwdriver to remove (3) T15 screws. Use the Torx T10 drivers to remove the (2) T10 screws. Disconnect the cables. See Picture 7.
8. Clutch Screw Removal: Use a T15 Torx screwdriver to remove the screws (1 on each side). See Picture 8.
9. Metal Cover Disassembly: Use a T10 Torx screwdriver to remove the screws. See Picture 9.
10. Video PCB Removal: Use a T15 Torx screwdriver to remove the (4) T15 screws. Use the 3/16" nut driver to remove the (4) 3/16" screws. See Picture 10.
11. Keyboard Removal: Use a flat blade screwdriver to pry up on one corner of the keyboard. Note that the keyboard was assembled using adhesive tape on the bottom. See Picture 11.
12. Keyboard PCB Disassembly: Use a T15 Torx screwdriver to remove the (4) T15 screws. Disconnect the cables. Remove PCB. See Picture 12.
13. Display Panel Disassembly: Use a flat blade screwdriver to pop out the rubber screw covers. Use a T10 Torx screwdriver to remove the (4) screws. See Picture 13.
14. Display Panel Cover Removal: Use a flat blade screwdriver to pry apart the display panel cover. Note that adhesive tape was used to assemble the panel cover. See Picture 14.
15. Display Panel Retention Bracket Disassembly: Use a T8 Torx screwdriver to remove the (8) T8 screws in the clutch retention brackets. See Picture 15.
16. Display Panel Disassembly: Use a T10 Torx screwdriver to remove the (6) T10 screws in the clutch retention and display brackets. Use a T10 Torx screwdriver to remove the (2) T10 screws holding the OSD PCB. Remove display, clutches and OSD PCB from the chassis. See Picture 16.

3.2 Optional Graphics: Graphic illustrations (photos) below to identify items contained in the product that require selective treatment. Illustrations (photos) correspond to the steps above.

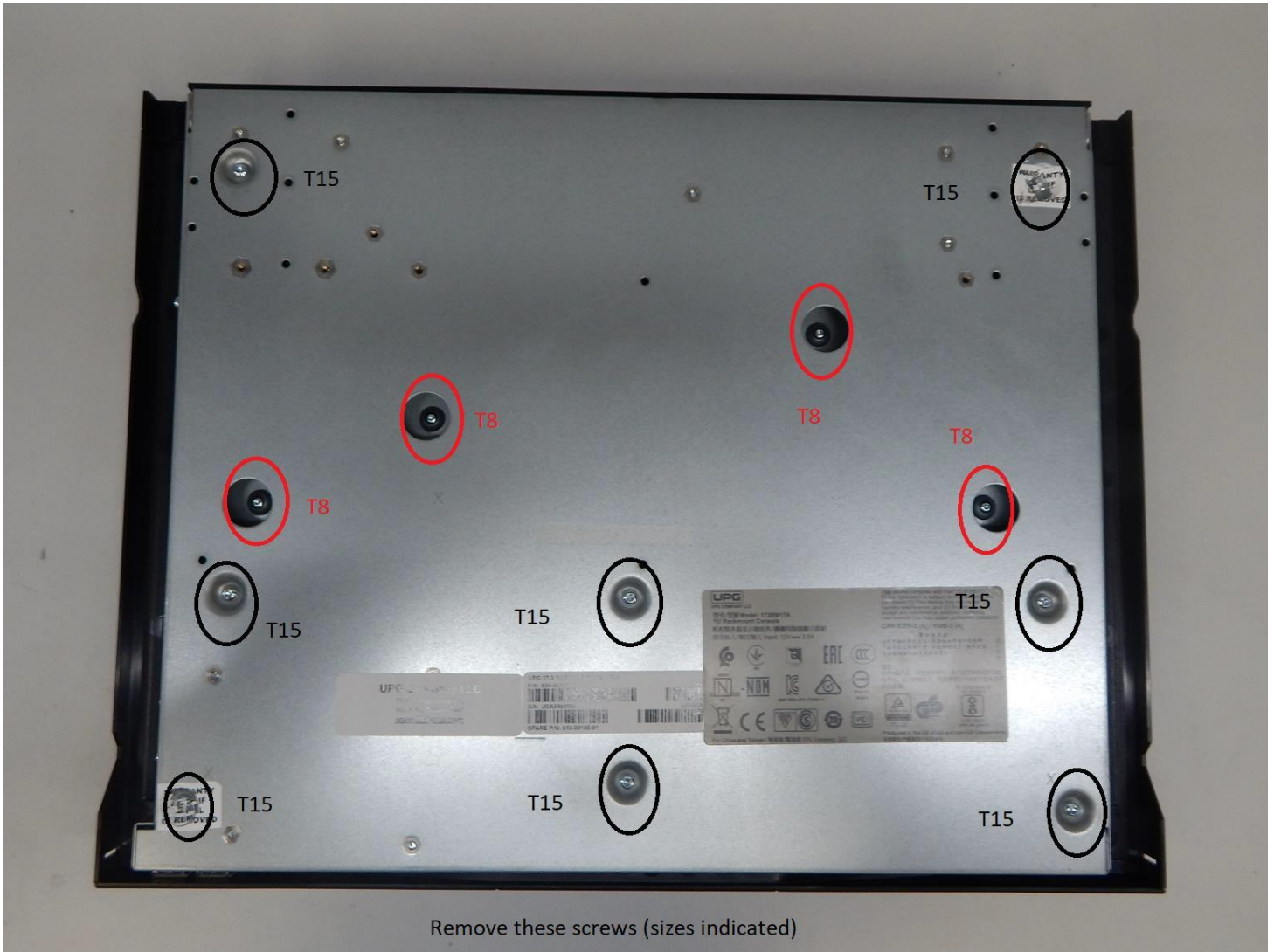
Picture 1: Slide Rail Removal



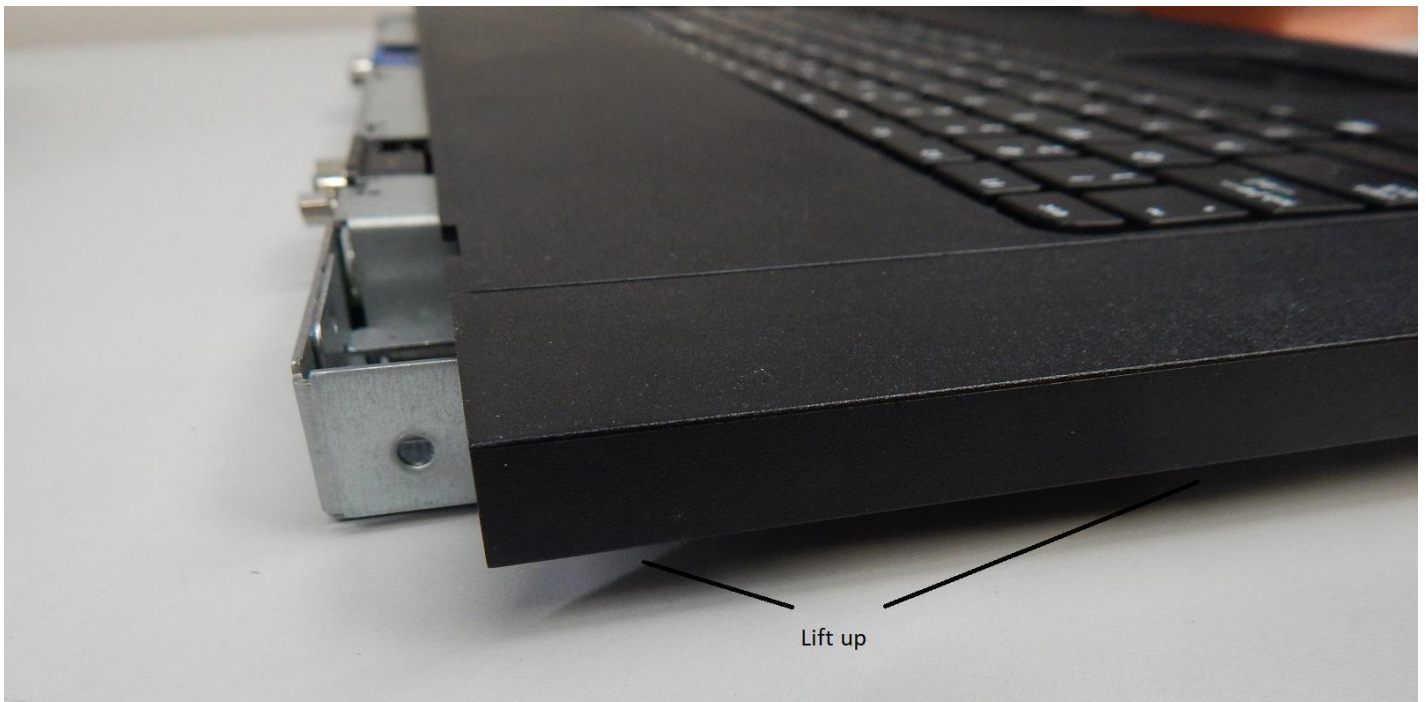
Picture 2: Console Back and Clutch Cover Disassembly



Picture 3: Palm Rest and Keyboard Screws



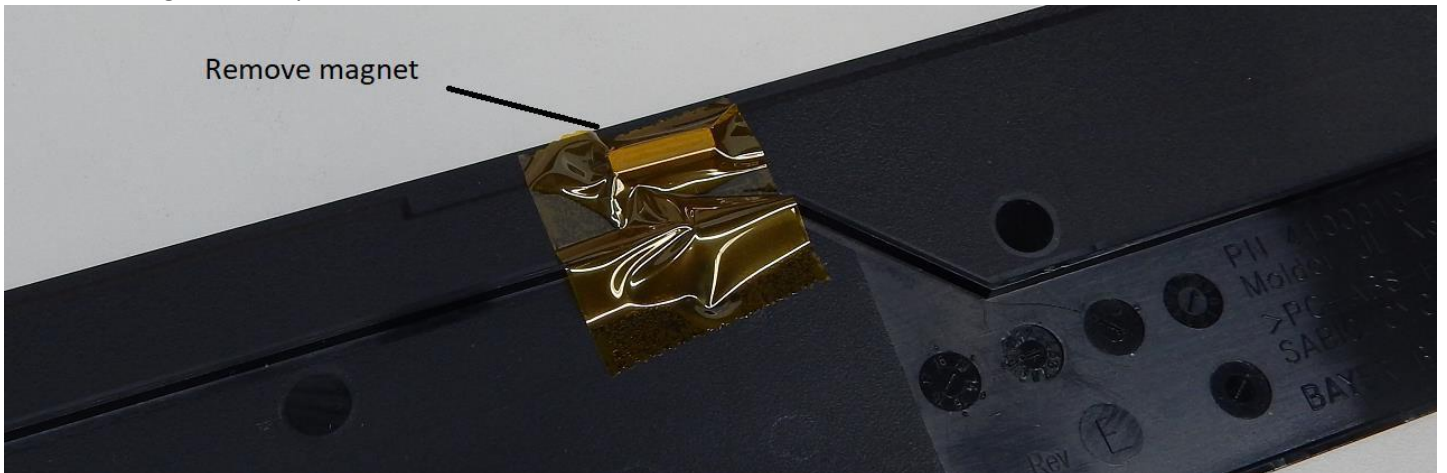
Picture 4: Palm Rest Removal



Picture 5: Touchpad Removal



Picture 6: Magnetic Component Removal



Picture 7: Clip and Cable Removal



Picture 8: Clutch Screw Removal

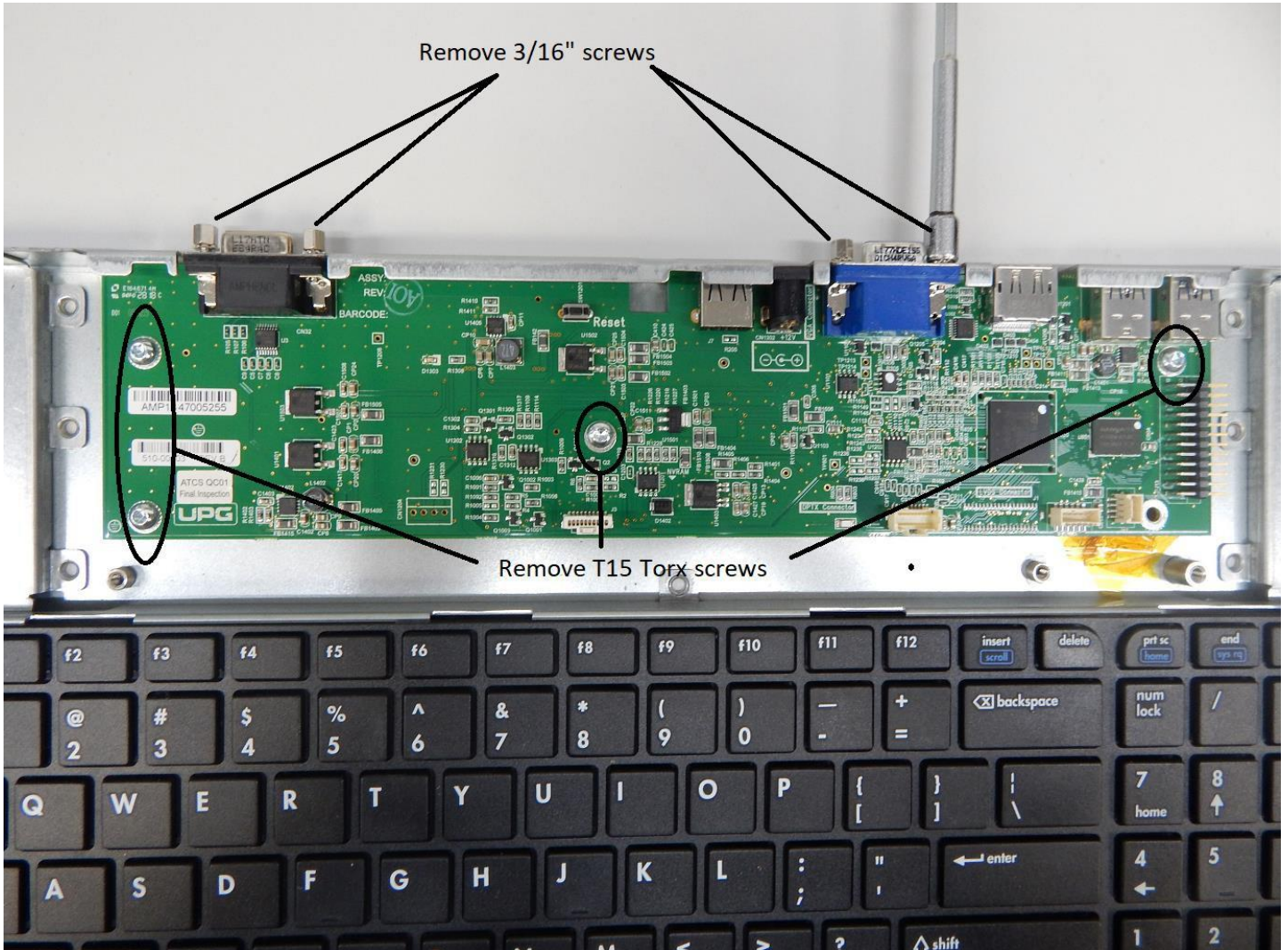


Picture 9: Metal Cover Disassembly





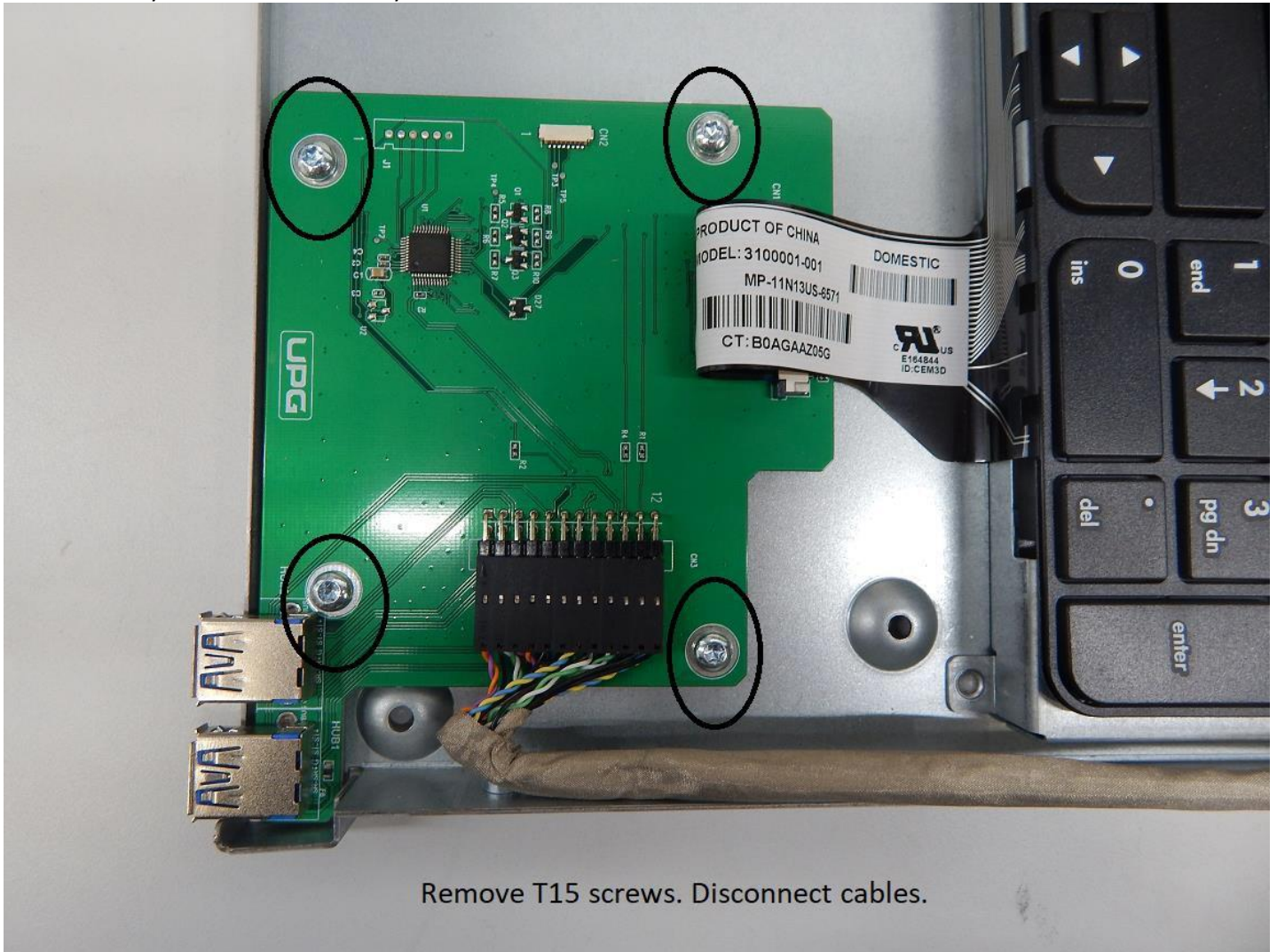
Picture 10: Video PCB Removal



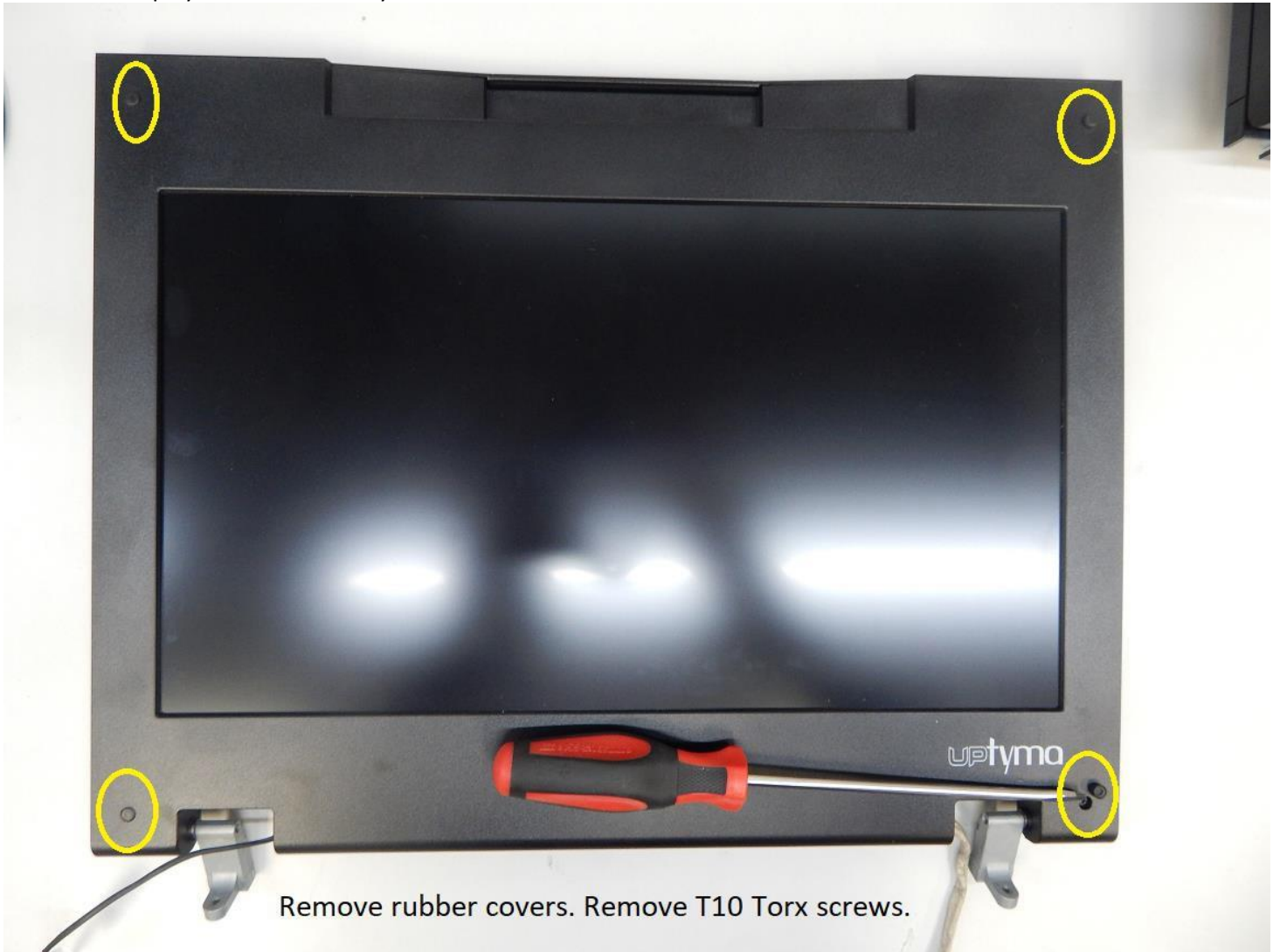
Picture 11: Keyboard Removal



Picture 12: Keyboard PCB Disassembly



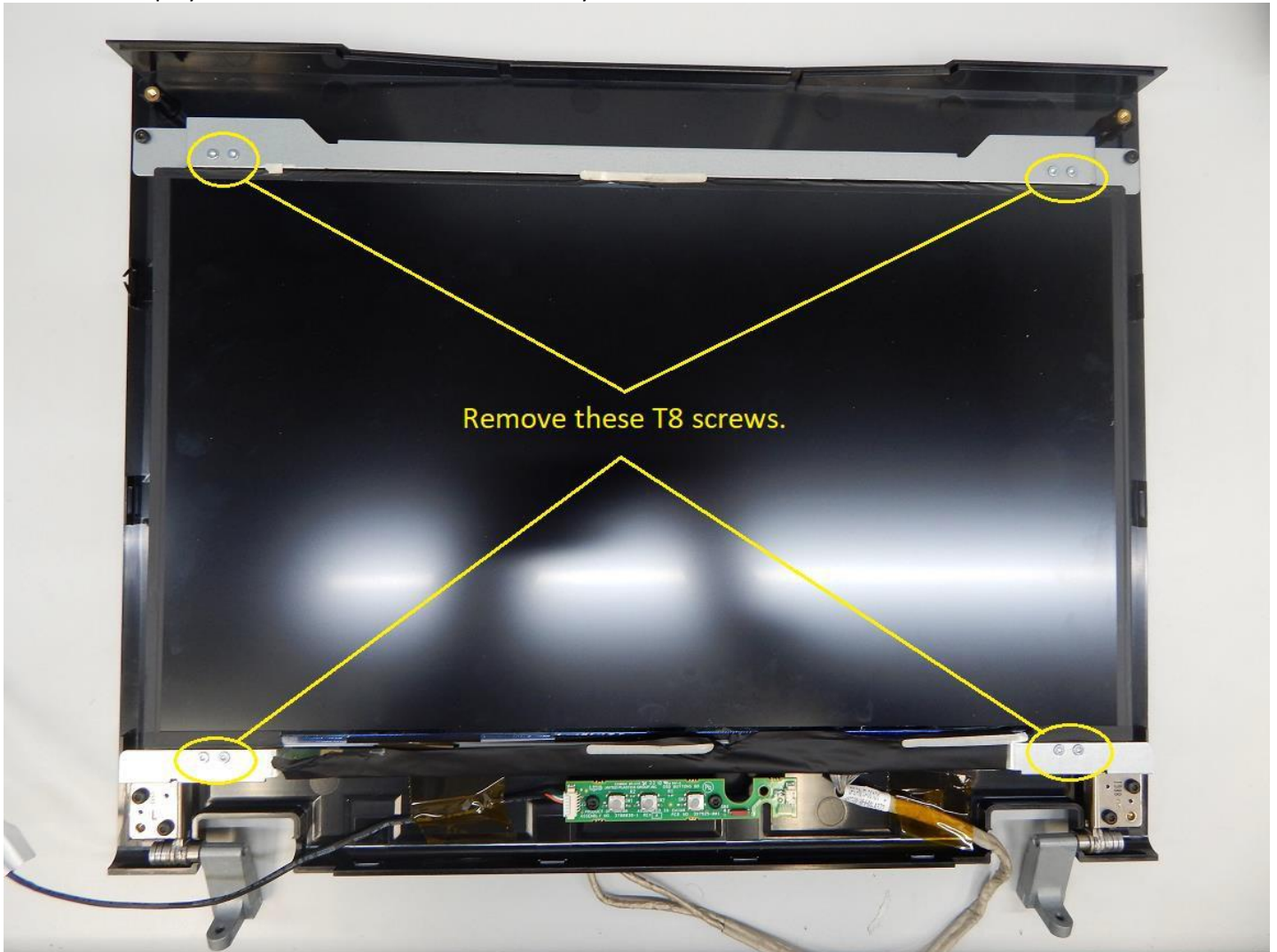
Picture 13: Display Panel Disassembly



Picture 14: Display Panel Cover Removal



Picture 15: Display Panel Retention Bracket Disassembly



Picture 16: Display Panel Disassembly

