



Product End-of-Life Disassembly Instructions

Product Category: Control Panel/Display

Marketing Name/Models(s): Panel Display/150TL17A

Purpose: This document provides the basic instructions for the disassembly of a product to remove components and materials requiring selective treatment as defined by Directive 2012/19/EU, Waste Electrical and Electronic Equipment (WEEE). It is intended for use by end-of-life recyclers or treatment facilities.

1.0 Items Requiring Selective Treatment

1.1 Items listed below are classified as requiring selective treatment.

1.2 Quantity of items within the product that require selective treatment (right column).

Item Description	Notes	Quantity of items included in product
Printed Circuit Board (PCB) or Printed Circuit Assembly (PCA)	With a surface area greater than 10 sq cm	2
Batteries	All types	0
Mercury-containing components	Such as: mercury in lamps, display backlights, scanner lamps, switches, batteries	0
Liquid Crystal Display (LCD) with a surface area greater than 100 sq cm	Includes background illuminated displays with gas discharge lamps	1
Cathode Ray Tube		0
Capacitors/Condensers containing PCB/PCT		0
Electrolytic Capacitors/Condensers measuring greater than 2.5 cm in diameter or height		0
External electrical cables and cords	Customers may not have used all the cables and cords supplied.	4
Gas Discharge Lamps		0
Halogenated Flame Retardants		0
Components and parts containing toner ink, including liquids, semi-liquids (gel/paste) and toner	Including cartridges, print heads, tubes, vent chambers and service stations.	0
Components and waste containing Asbestos		0
Components and waste containing Cadmium		0
Components, parts and materials containing refractory ceramic fibers		0
Components, parts and materials containing radioactive materials		0

2.0 Tools Required

2.1 List of tools types and sizes required to be used to disassemble the product to a point where components and material requiring selective treatment can be removed.

Tool Description	Tool Size
Torx screwdriver	T10
Nut driver	3/16 in
Flat blade screwdriver	#2
Philips screwdriver	#1

3.0 Product Disassembly Process

3.1 List of basic steps that should typically be followed to remove components and material requiring selective treatment.

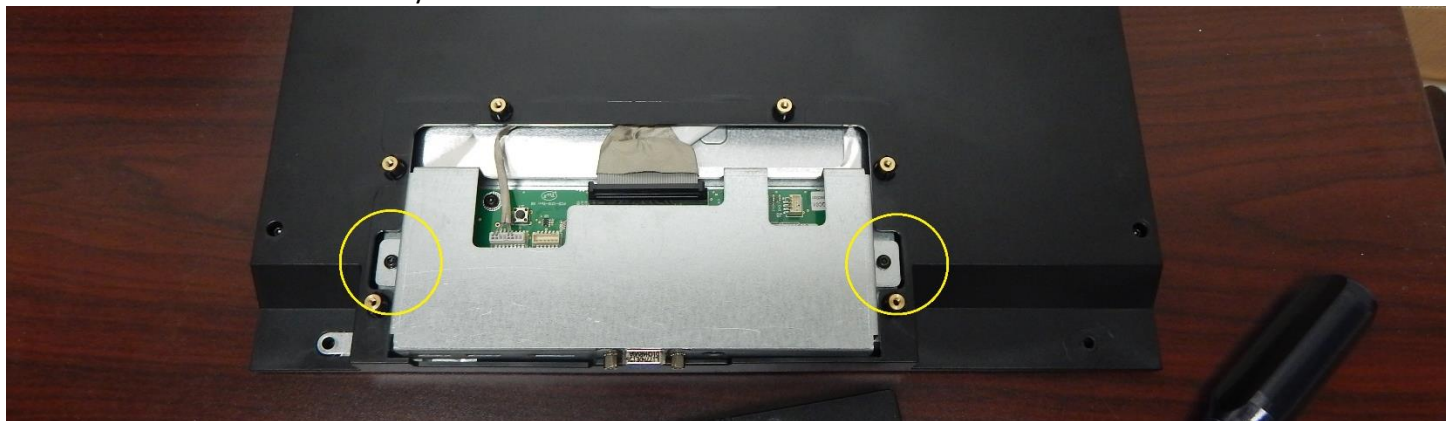
1. Remove Rear Panel Screws: Use a T10 Torx screwdriver to remove the (10) Torx screws. See Picture 1.
2. Metal Cover Disassembly: Use a T10 Torx screwdriver to remove the (2) Torx screws. Remove from chassis. See Picture 2.
3. Disconnect Cables: Disconnect the cables from the video PCB. See Picture 3.
4. Video PCB Screw Removal: Use a T10 Torx screwdriver to remove the (4) Torx screws. See Picture 4.
5. Video PCB Removal: Use the 3/16" nut driver to remove the (2) hex screws. Remove the PCB from the chassis. Note that there might be resistance where the USB ports protrude through the chassis. See Picture 5.
6. Bezel Removal: Use a flat blade screwdriver to pry off the bezel. See Picture 6.
7. Display Disassembly: Use a T10 Torx screwdriver to remove the (6) Torx screws. See Picture 7.
8. Mounting Plate Disassembly: Use a T10 Torx screwdriver to remove the (2) Torx screws. See Picture 8.
9. Display Mounting Rail Disassembly: Use a T10 Torx screwdriver to remove the (4) Torx screws (two on each side). See Picture 9.
10. Remove Foil Backing: Remove the protective foil from the back of the display. See Picture 10.
11. Display Rear: Use a #1 Philips screwdriver to remove (3) screws. Lift to remove the protective cover. See Picture 11.
12. Cable Removal: Disconnect cables and remove from assembly. See Picture 12.

3.2 Optional Graphics: Graphic illustrations (photos) below to identify items contained in the product that require selective treatment. Illustrations (photos) correspond to the steps above.

Picture 1: Remove Rear Panel Screws



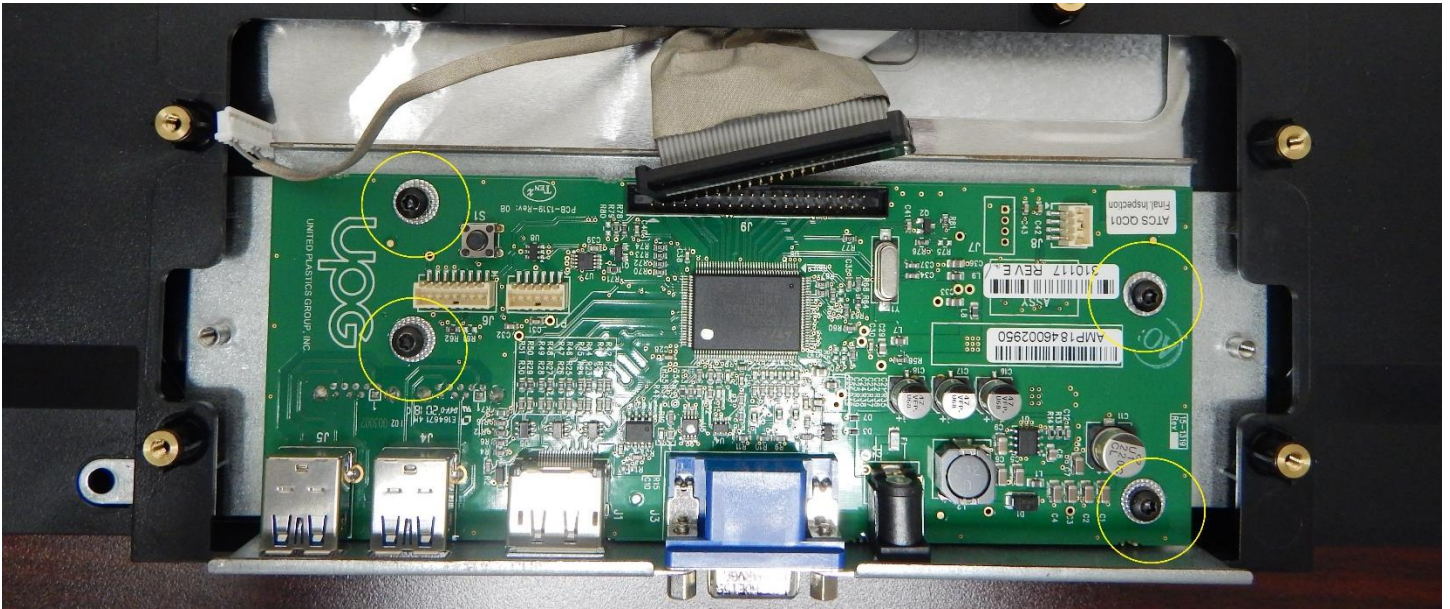
Picture 2: Metal Cover Disassembly



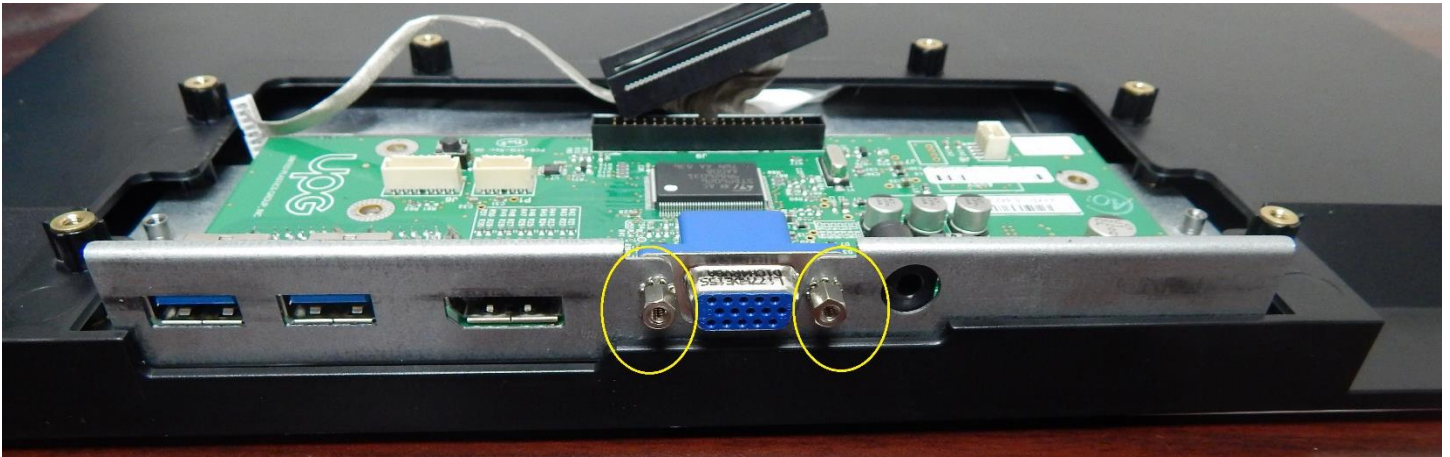
Picture 3: Disconnect Cables



Picture 4: Video PCB Screw Removal



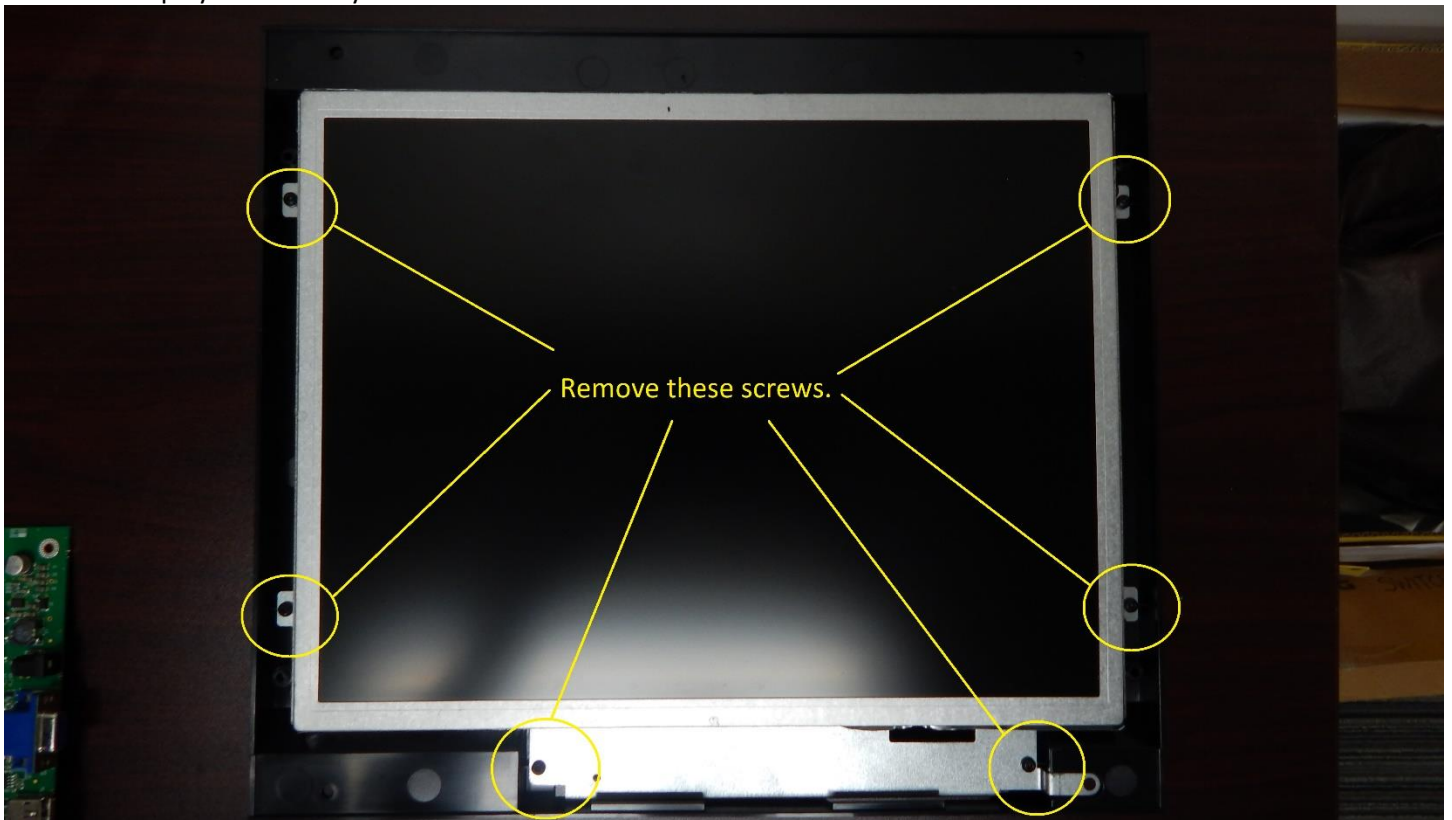
Picture 5: Video PCB Removal



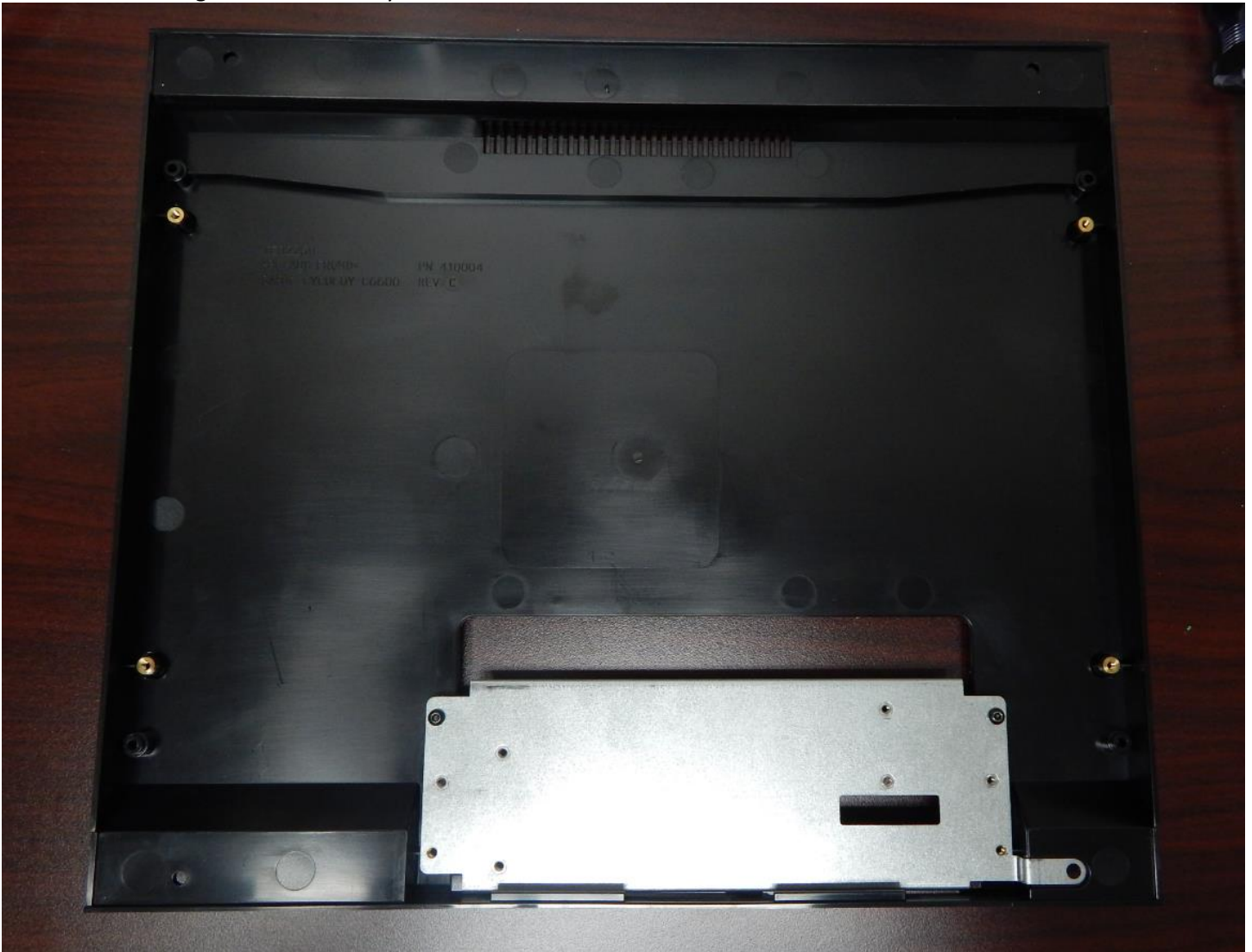
Picture 6: Bezel Removal



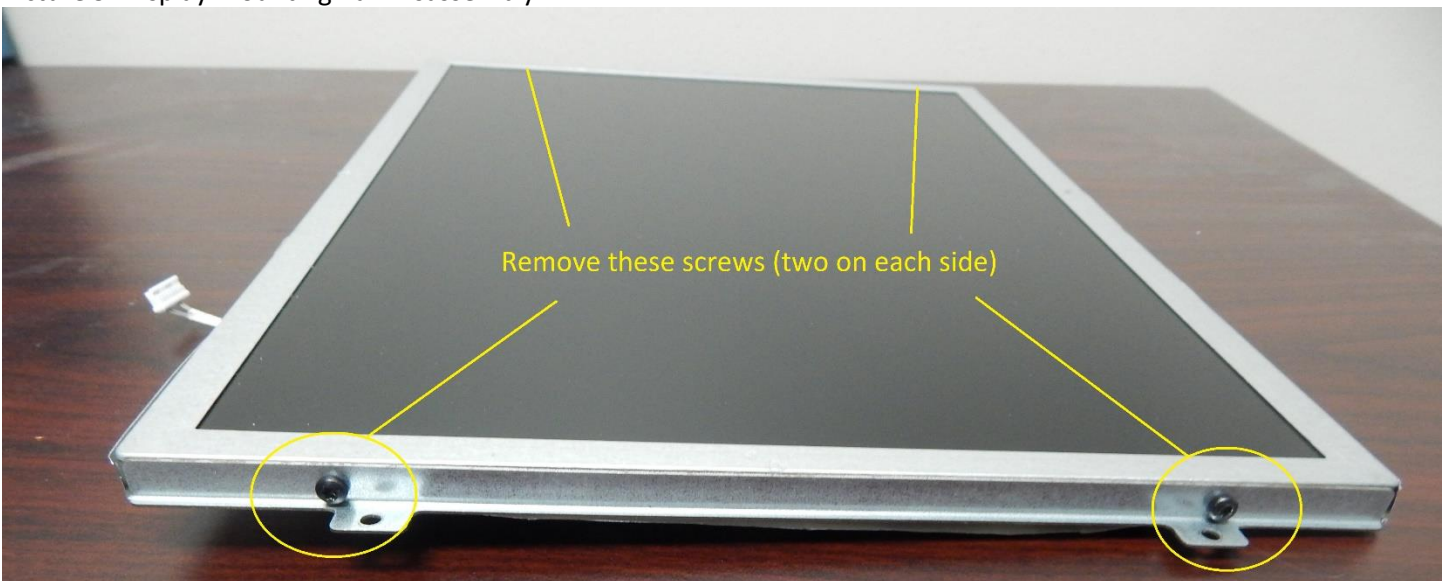
Picture 7: Display Disassembly



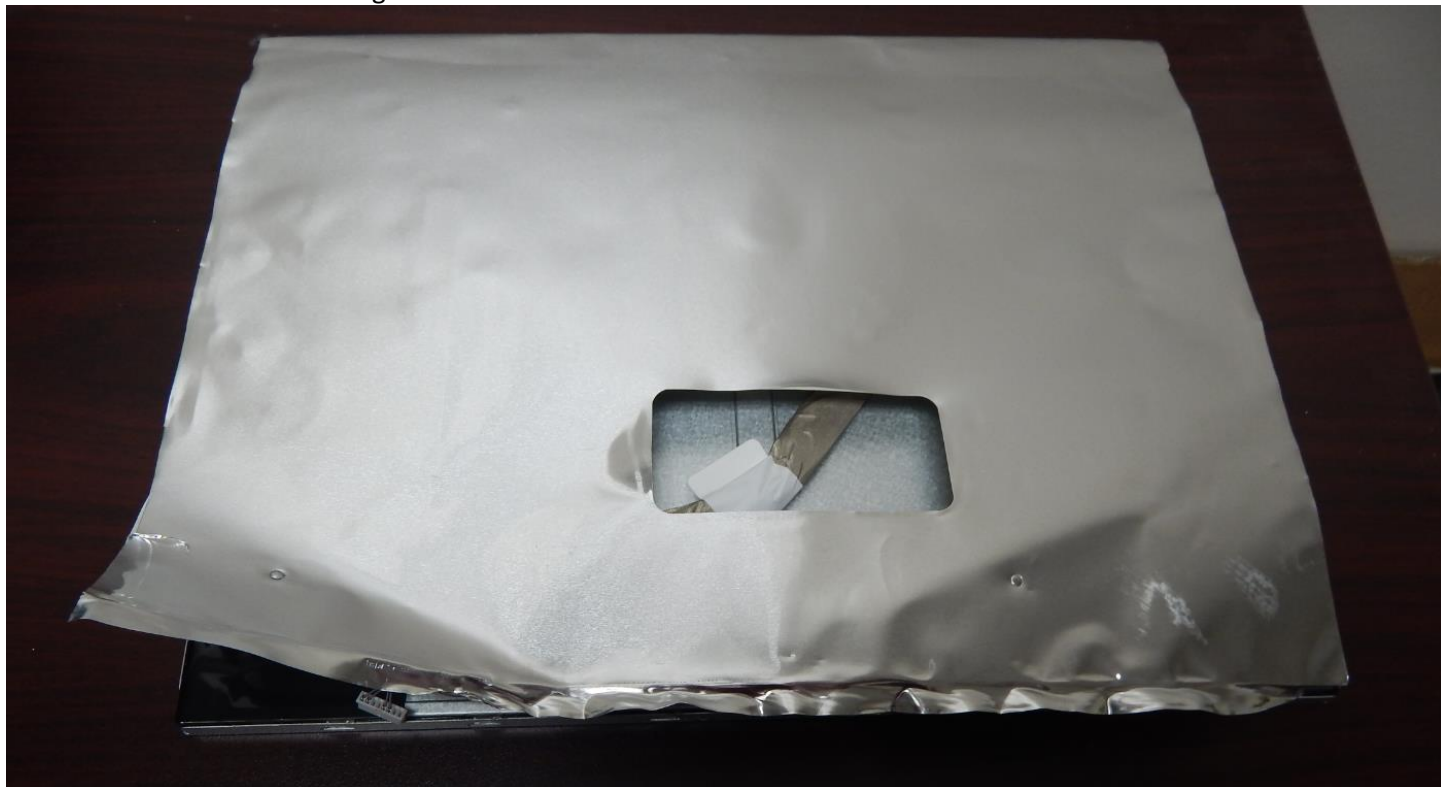
Picture 8: Mounting Plate Disassembly



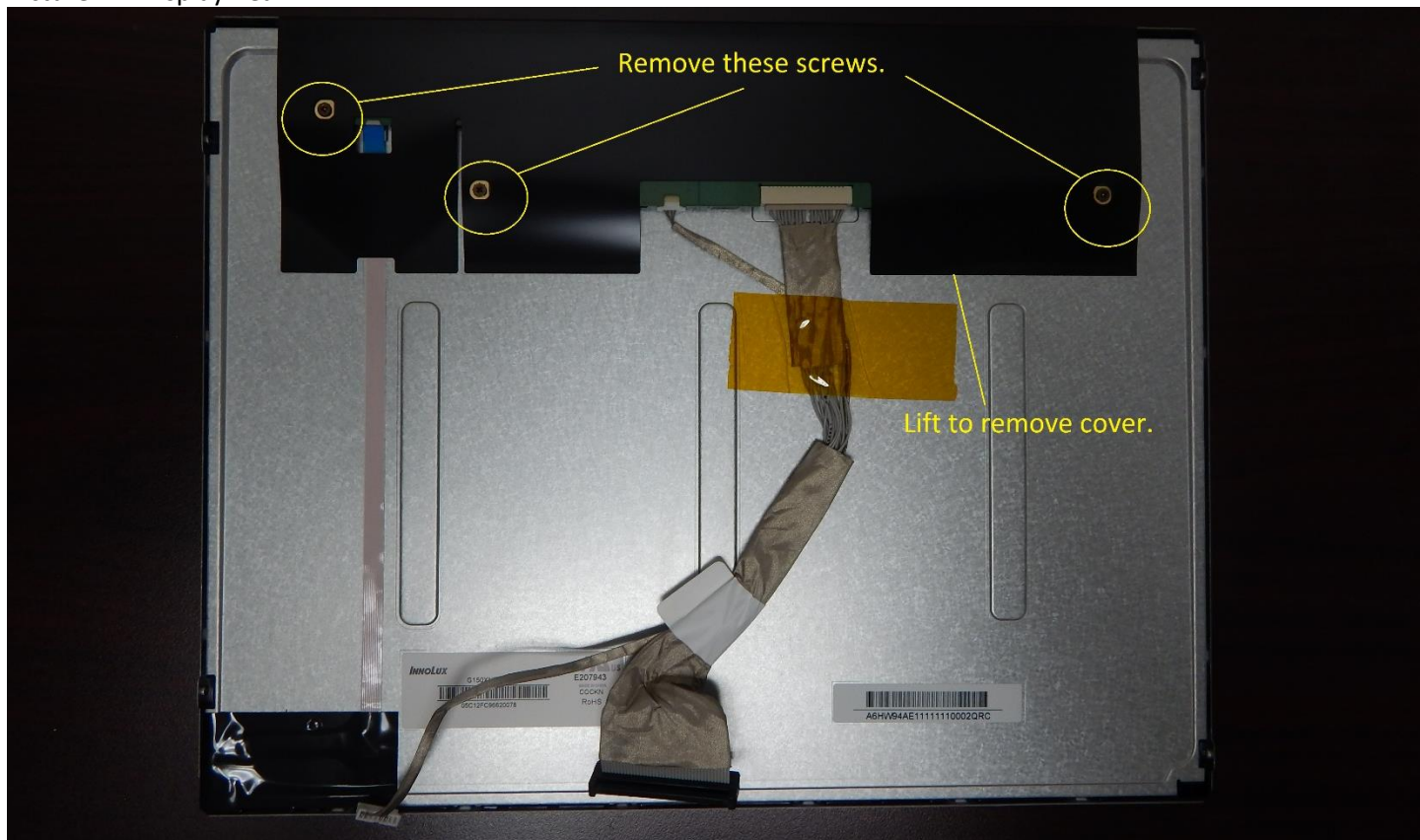
Picture 9: Display Mounting Rail Disassembly



Picture 10: Remove Foil Backing



Picture 11: Display Rear



Picture 12: Cable Removal

